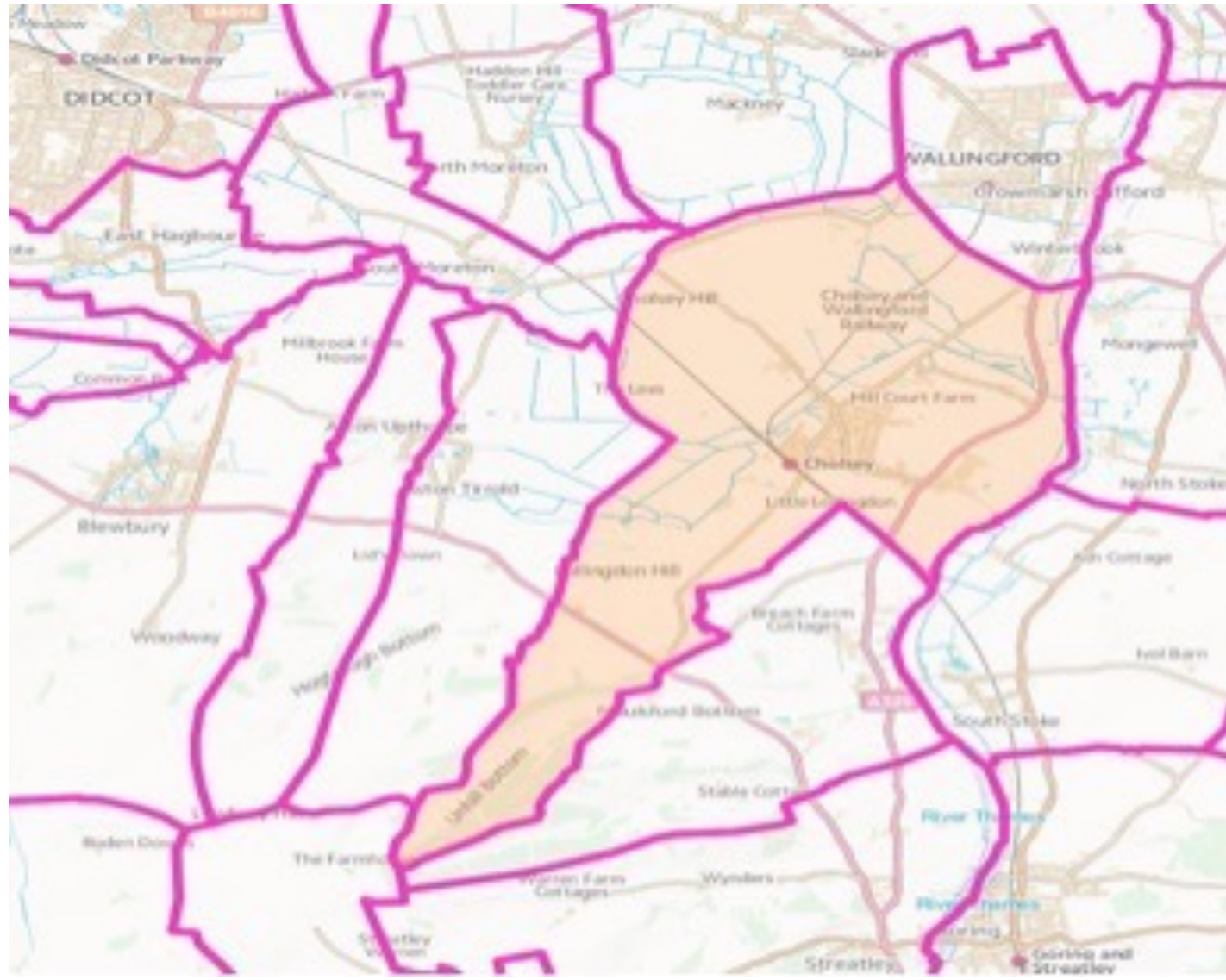


# Cholsey Neighbourhood Plan



## What are we doing?

We are working with SODC, within the framework of the emerging Local Plan, to develop a Neighbourhood Plan to express our needs and aspirations as a community. In conjunction with the new SODC Local Plan, which is expected to come into force later this year, the Neighbourhood Plan will attempt to establish a suitable framework that will be used to guide the course of future improvements and developments in our parish.

## What is a Neighbourhood Plan?

Neighbourhood planning provides a statutory right for local people and businesses to plan for the future of their neighbourhood in a sustainable and fair way. Crucially, it is designed to enable local people and communities to strongly influence how development will occur locally.

Neighbourhood plans are about improving and developing neighbourhoods in a sympathetic and sustainable way, not completely stopping growth.

Neighbourhood planning has the potential to:

- make improvements, not just to housing, but to travel, health and wellbeing, community amenities – such as recreational facilities and communal green spaces, and the local economy
- give our community a bigger say over the type, location, size, pace and design of development coming forward
- tackle long term trends or challenges affecting our community
- foster progressive relationships between our community, developers and local authorities
- provide our neighbourhood with more influence on how these things are delivered and implemented

Our Neighbourhood Plan cannot propose less development than the SODC Local Plan, but it can propose such things as alternative sites or higher design standards for buildings. In short, it has an intensely local focus and can be as ambitious or modest as the community decides.

When made, and following a successful referendum of the local community, our Neighbourhood Plan, together with the SODC Local Plan, becomes a primary planning reference for our Parish, and will be used to determine planning applications and improvements to our services and amenities.

## What Happens Next?

Cholsey Neighbourhood team would like to know what you think of our parish. What do you like about our area, and what would you change? What do we do well, and what could we do better?

The Cholsey Neighbourhood team will be organising a series of briefings, meetings and questionnaires during the weeks and months ahead – including a series of meetings at Cholsey Pavillon – to keep everyone up to date on how the Neighbourhood Plan is progressing. Your voice counts, so please help us to help you by actively getting involved.

Thank you from Cholsey Neighbourhood team.

[www.cholsey-plan.com](http://www.cholsey-plan.com)

# Cholsey Neighbourhood Plan



**Paul Ramsay**

Chairman for the Steering Committee  
Cholsey Parish Councillor

*I believe that the Cholsey Neighbourhood Plan will provide a blueprint for taking forward the aspirations of the village to build and provide a sustainable and vibrant community.*

## Key Groups / Sectors we are looking at:

### Education:

This group is chaired by Val Bolt and her team are looking at all aspects of education from pre-school to adult; our existing schools and what would be required when additional homes are built

### Commercial:

This group is chaired by Paul Ramsay and covers employment and retail interests. Can we grow our small business into larger successful business? Does the retail centre at the Forty cover all of our needs?

### Housing:

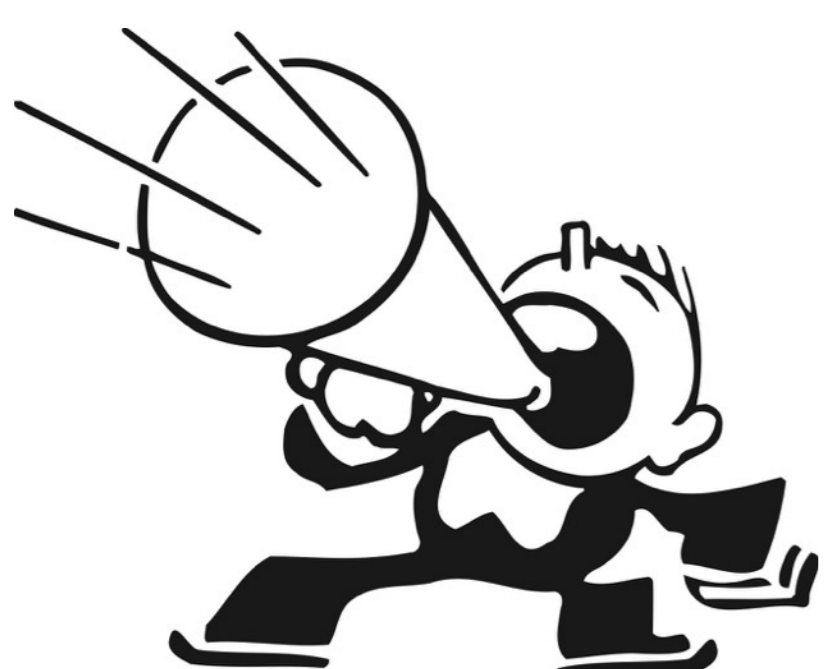
This group is chaired by Beryl Guiver and her team are looking at how to provide sufficient market and affordable housing to meet local Cholsey needs and for specific groups in the community including older people, younger or first time buyers and those who cannot afford to purchase a home and ensure that new housing provides good quality accommodation, is neighbourly to existing residents and is at an appropriate density and of a good design acknowledging and enhancing the rural character of Cholsey, a village forming part of the sensitive setting of both the Chilterns and North Wessex Downs Areas of Outstanding Natural Beauty.

### Services:

This group is chaired by Mark Gray and covers services such as health care, children centre and social care along with community groups and leisure interests for all.

### Transport:

This group is chaired by John Sinclair is looking to address the challenges of congestion and traffic speed, movement must be managed by optimising the provision of public transport, and encouraging walking and cycling, so as to reduce car journeys.



*It's your village. Don't miss the chance to have your say.*